

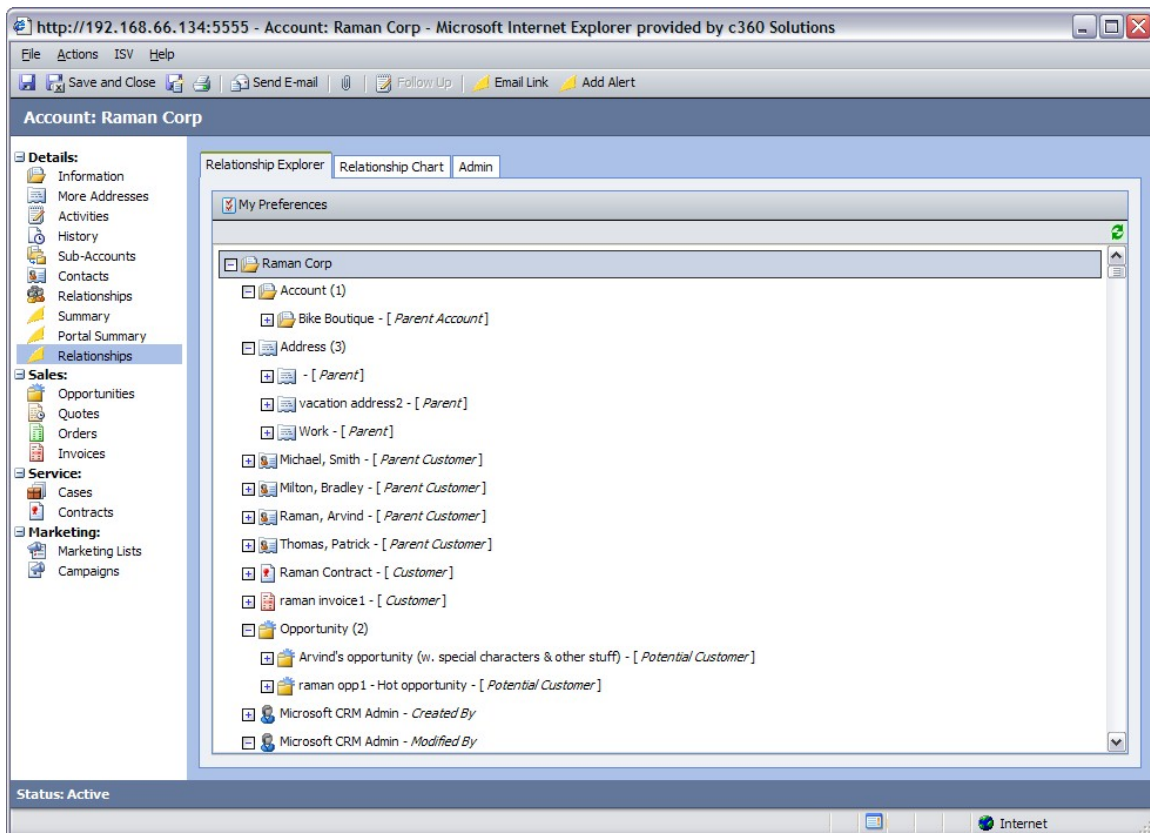


c360 Solutions Relationship Explorer for Microsoft CRM 3.0

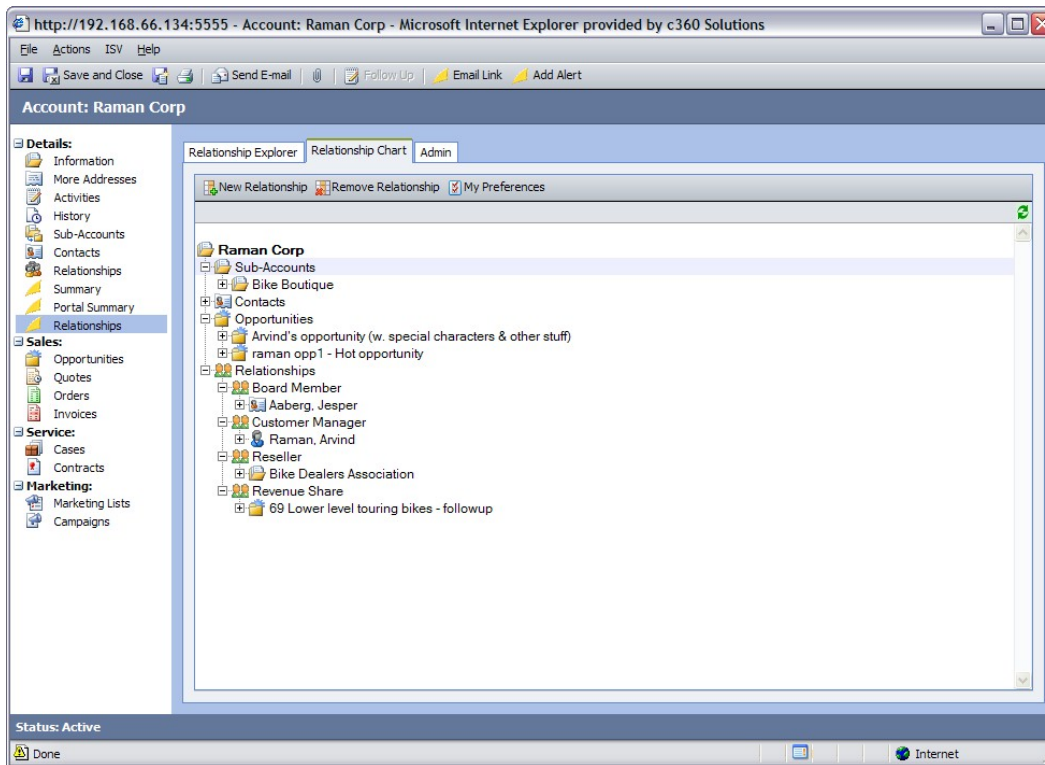
Overview

c360 Solutions Relationship Explorer is a Microsoft CRM enhancement that improves and extends the relationship display and linking capabilities of Microsoft CRM. Relationship Explorer uses an intuitive tree-based structure to display all relationships that exist between entities within Microsoft CRM. In addition, Relationship Explorer includes the optional 'c360 Relationships' solution that provides organizations the ability to allow CRM users to create relationships not possible through Microsoft CRM. The 'c360 Relationships' tab lets users create many-to-many relationships between CRM Users, Contacts, Accounts and Opportunities. Relationship Explorer allows Microsoft CRM users to:

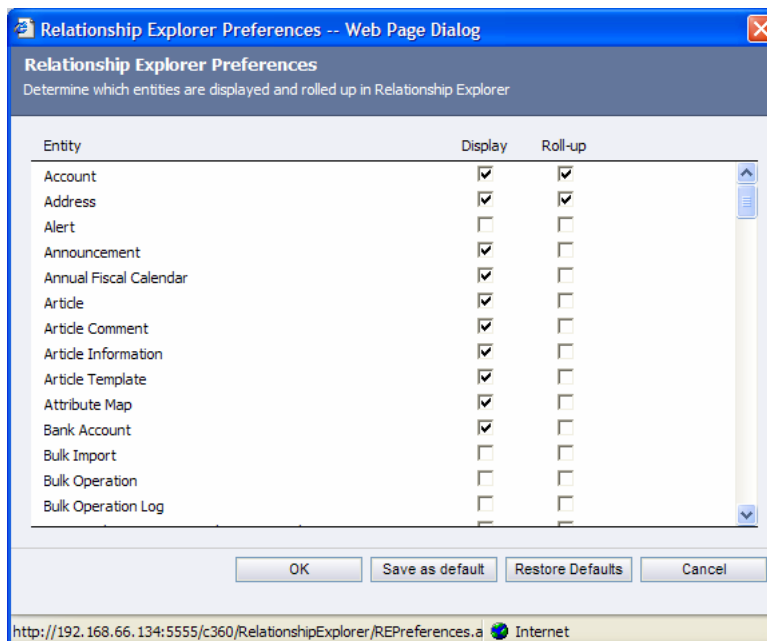
- From any CRM record, see all relationships that exists between CRM entities (including custom entities) in an intuitive hierarchical tree-based structure
- See a complete view of any CRM record's relationship hierarchy in a single place
- Set user preferences to determine how the relationship tree should display including which entities to display in detail and which to summarize
- Immediately see a count of relationships by entity type
- Add additional custom relationships between entities not possible through Microsoft CRM (Link CRM Users, Contacts, Accounts and Opportunities)



The Relationship Explorer tree view discovers and displays all relationships between CRM entities



The 'c360 Relationships' solution provides CRM users the ability to create relationships not possible in CRM



Relationship Explorer allows the user to set individual preferences such as which entities to display in detail and which to summarize (roll-up)



Languages

All c360 products are available in multiple languages and can be easily translated into additional languages by simply making changes to the label and caption values found in a separate .XML document. Each product's Installation and Configuration guide provides detail on making language modifications. All product downloads include language files for multiple languages.

Licensing

The number of Relationship Explorer licenses must equal or exceed the number of assigned user licenses or Relationship Explorer will not function for any user. For example, a company that has purchased 25 Microsoft CRM licenses, but has only 11 of them assigned to users needs 11 Relationship Explorer licenses.

Support, Upgrades and Enhancements

The list price of Relationship Explorer includes first year support, upgrades and enhancement per the c360 Solutions Software license agreement. After the first year, a support and enhancement plan can be purchased for 20% of the total cost of all Relationship Explorer licenses.

Information

For more information on c360 Summary and the Core Productivity Pack, contact your c360 reseller:

CABC Ltd
11-13 The Broadway
Newbury
Berks
RG14 1AS
<http://www.msCRM-cabc.co.uk>
email: sales@cabc.co.uk
Tel 01635 570970
